

Peacefulness	★★★★☆☆
View	★★★★☆☆
Living room	★★★★☆☆
Rooms	★★★★☆☆
Bathrooms	★★★★☆☆
Kitchen	★★★★☆☆



www.villasinitaly.biz



Located in the middle of the green chianti countryside, on a quiet and peaceful hill 300 meters above sea level, Maisonette Belvedere is part of a magical place. You will totally enjoy the pleasures of experimenting the life in an historic Tuscan estate. Maisonette Belvedere is one of ten restored cottages and villas that comprise Tuscan estate. Maisonette and villas can be rented singularly or together to suit your group size.

### Main house

This charming air-conditioned house was formerly the castle's chapel. Nowadays it is an enchanting two-story cosy maisonette with wood floors and a private garden. Small groups will find this to be ideal Italy villa!

### Ground Floor

The ground floor houses the living room. A large open arch, a feature typical of classic Italian villas, separates the living room from the fully equipped kitchen. The kitchen has all modern convenience such as a dishwasher, oven and refrigerator. A door in the kitchen leads to a private patio. The ground floor also has one bathroom.

### First Floor

An iron staircase ascends to a mezzanine with comfortable and gracious accommodation for two single beds. The first floor has a further bedroom with a double bed (queen-size) and an ensuite bathroom.

## Beds & Baths

Sleeps up to 4adults. (2 bedrooms & 2 baths) Mezzanine with comfortable and gracious accommodation for two single beds. Double bedroom with a double bed (queen-size) and an ensuite bathroom. The other bathroom is located on the ground floor.

## Living Space

Nicely decorated living room. Fully equipped kitchen with all modern convenience such as a dishwasher, oven and refrigerator.

## Outdoors

The property is surrounded by maturing gardens and vineyards. Private patio and garden with table and chairs, that's enclosed by a green hedge. Outside of Maisonette Santa you will be part of the most attractive views of the hilly Tuscan Chianti. Shared swimming pool (approx 14 x 8 mt ).

## Household Essentials

Fully air-conditioned property. Fully equipped kitchen with all modern convenience such as a dishwasher, electric oven. Washing machine and refrigerator. Iron and iron board, T.v, Satellite Tv, Phone, Internet connection, safety box, parking lot, barbecue.

## Notable Features

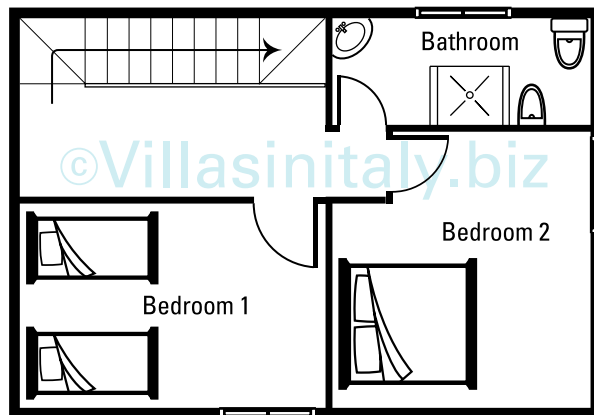
- concierge services
- half an hour away from Florence
- in the heart of Chianti
- peaceful, in the middle of vineyard
- proximity to wine canteens of Chianti region
- SOS (Secrets of Savings) Excursion is available on request, enjoy a full or half day shopping excursion buying the best products at factory prices!

## Nearby General Info

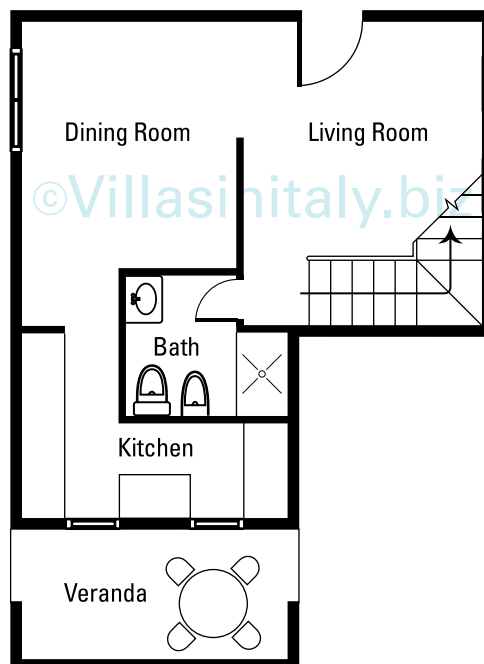
S. Gimignano (18kms), Greve Chinati (20 kms) Siena (15kms).  
Half an hour away from Florence and proximity to wine canteens of Chianti region.  
Supermarket and mini-market, restaurants and bank (with ATM) at approx 1 km.  
Petrol Station 24 Hours Service 3 Km.

## Outdoor Activities

Horseback riding, Golf, Tennis, Trekking, Fishing, bicycle rentals.



Maisonette Santa - First Floor



Maisonette Santa - Ground Floor