

Peacefulness	★★★★☆☆
View	★★★★☆☆
Living room	★★★★☆☆
Rooms	★★★★☆☆
Bathrooms	★★★★☆☆
Kitchen	★★★★☆☆



www.villasinitaly.biz



Beds & Baths

Sleeps up to 4 adults (+ 2). (2 bedrooms & 2 baths). One double bedroom (queen-size) with ensuite bathroom and a Twin bedroom with two single beds. Further possibility of accommodating two extra persons on a double sofa-bed. There is also a bathroom.

Living Space

Lovely living room with a cosy fireplace. The living room is separated from the dining room by a large open arch. Adjacent to the dining room is a fully equipped kitchen with a dishwasher, oven and refrigerator.

Outdoors

The property is surrounded by maturing gardens and vineyards. Has a private patio with table and chairs, that's enclosed by a green hedge. Outside of Maisonette Belvedere you will be part of the most attractive views of the hilly Tuscan Chianti. Shared swimming pool (approx 14 x 8 mt).

Household Essentials

Fully equipped kitchen (dishwasher, electric oven, refrigerator), coffee machine, washing machine, iron and iron board, TV, Satellite Tv, Phone, Internet connection, barbecue, parking lot, air conditioning in the bedrooms.

Notable Features

- concierge services
- half an hour away from Florence
- in the heart of Chianti
- peaceful, in the middle of vineyard
- proximity to wine canteens of Chianti region
- SOS (Secrets of Savings) Excursion is available on request, enjoy a full or half day shopping excursion buying the best products at factory prices!

Nearby General Info

S. Gimignano (18kms), Greve Chinati (20 kms) Siena (15kms). Half an hour away from Florence and proximity to wine canteens of Chianti region. Supermarket and mini-market, restaurants and bank (with ATM) at approx 1 km. Petrol Station 24 Hours Service 3 Km.

Outdoor Activities

Horseback riding, Golf, Tennis, Trekking, Fishing, bicycle rentals.

Located in the middle of the green Chianti countryside, on a quiet and peaceful hill 300 meters above sea level: Maisonette Belvedere is one of ten restored maisonettes and villas that comprise Tuscan Estate. Villas can be rented singularly or together to suit your group size.

Main house

This gracious stone house, with its' independent entrance has a wood beamed ceiling and terracotta floors. It is furnished mainly with antiques from Tuscany. Accommodation extends to 6 persons when Maisonette Belvedere is rented singularly (not in conjunction with the other villas on the estate) Small groups will find this to be an ideal Italy vacation rental.

Ground Floor

The ground floor houses a lovely living room with a cosy fireplace. The living room is separated from the dining room by a large open arch, a feature that is characteristic of Italian villas in Tuscany. Just adjacent to the dining room is a fully equipped kitchen with a dishwasher, oven and refrigerator. A door in the kitchen leads to a private patio.

First Floor

The first floor houses two bedrooms, one with a double bed (queen-size), and the other with two single beds. There is a further possibility of accommodating two extra persons on a double sofa-bed. There is also a bathroom.

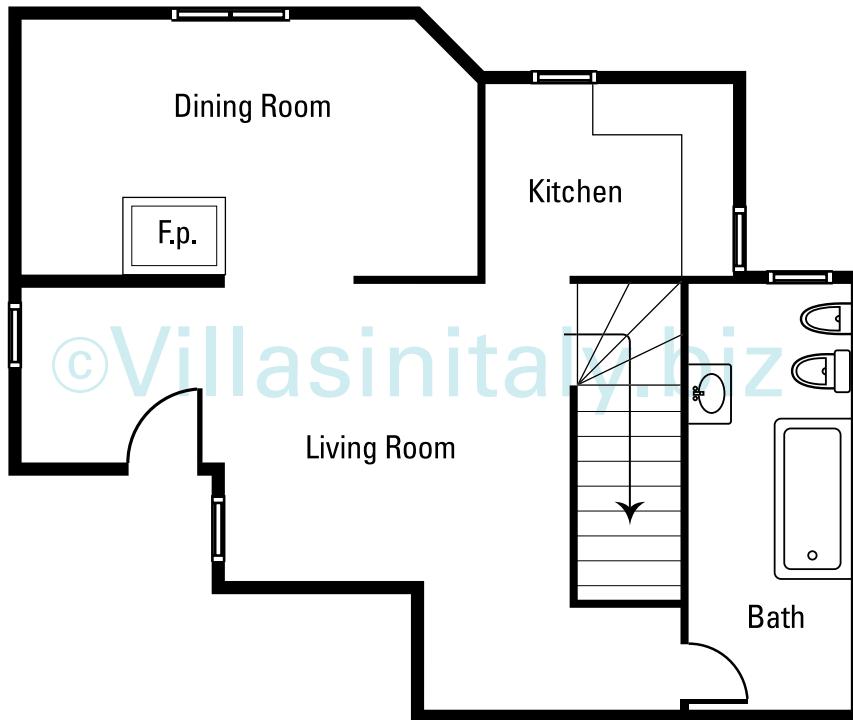
Maisonette Belvedere



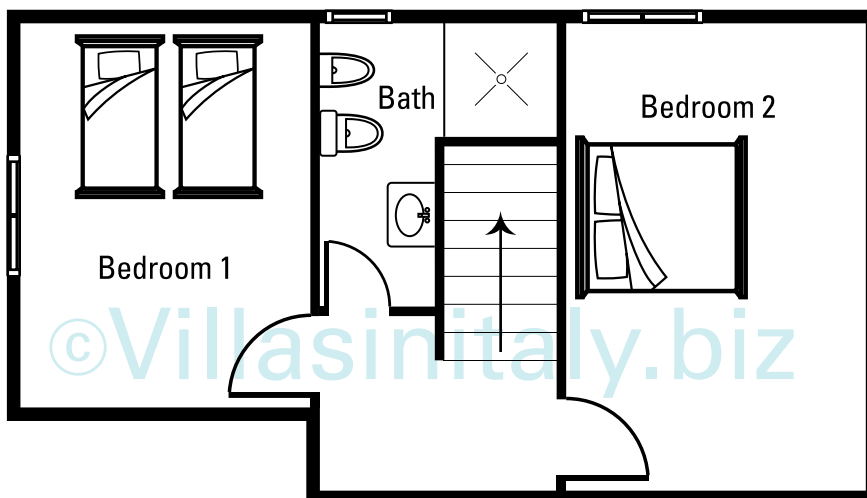
4 Sleeps - 2 Bedrooms - 2 Baths
Olona / Tuscany



www.villasinitaly.biz



Maisonette Belvedere - Ground Floor



Maisonette Belvedere - First Floor